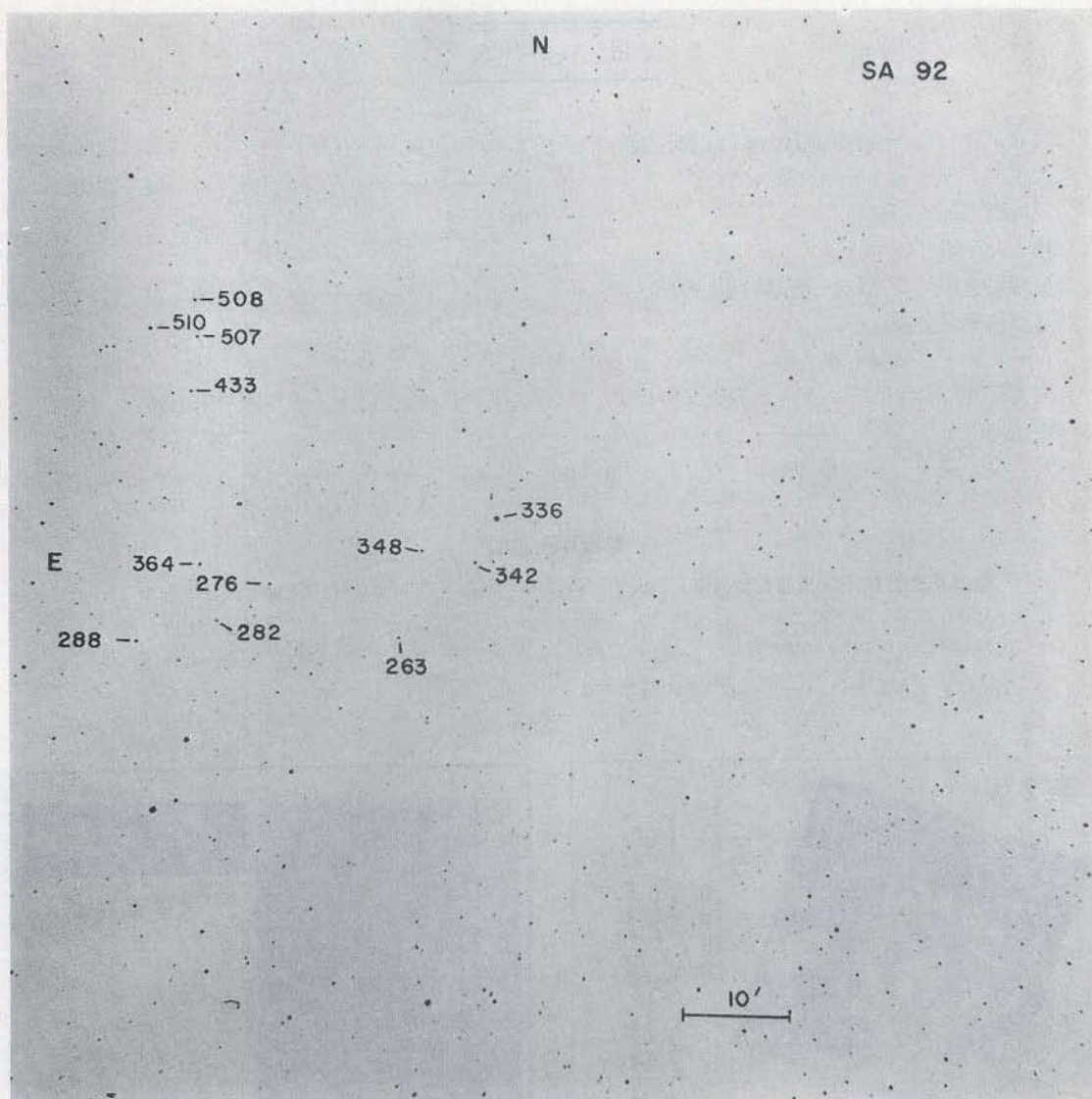


# 赤道選択区域の案内星図



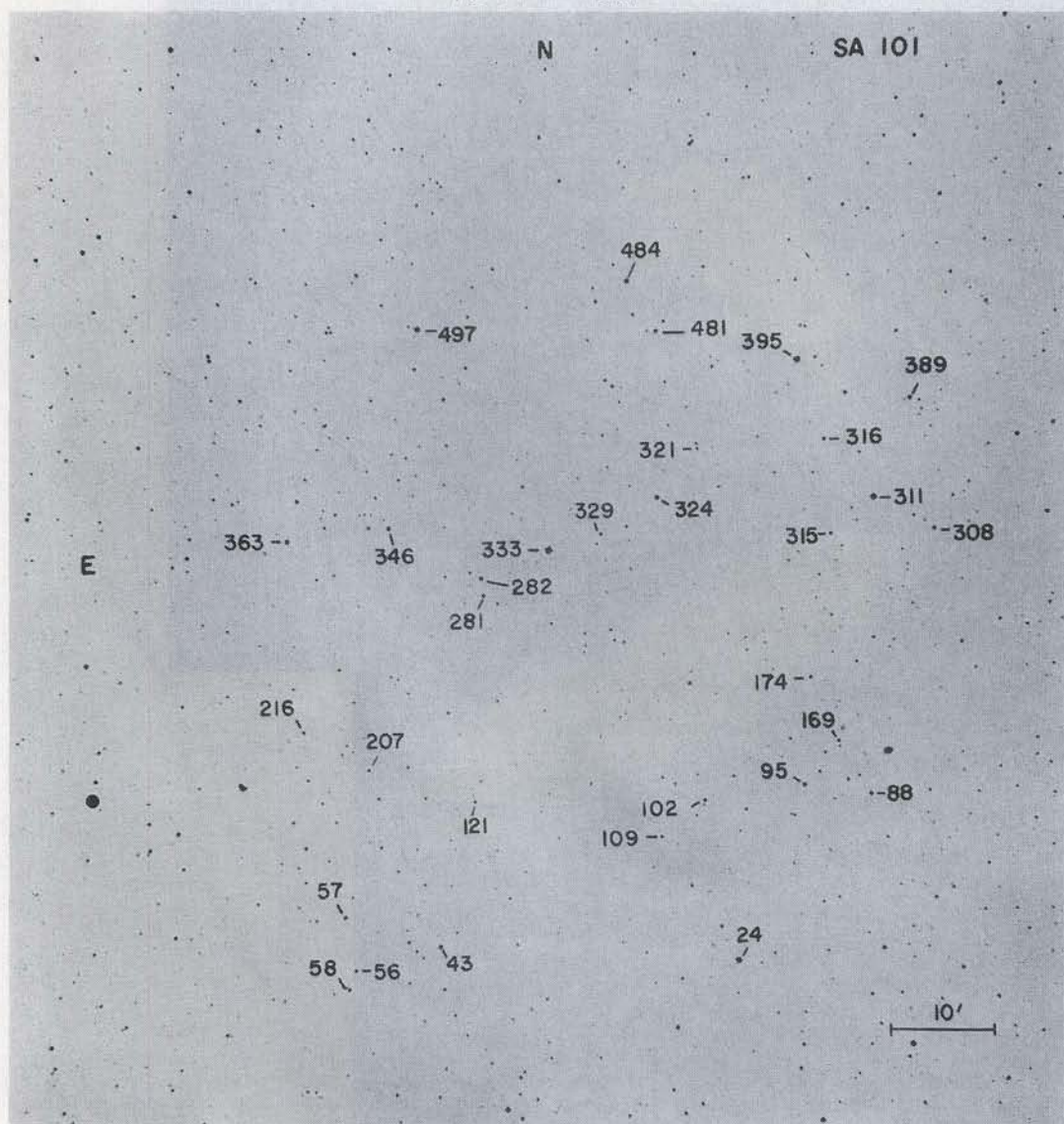
選択区域 No. 92, 中心星は 92-336=BD+0°142=HD 5319

A. U. LANDOLT

TABLE I. *UBV* photoelectric magnitudes and color indices for selected area stars.

Star	$\alpha(1975)$	$\delta(1975)$	<i>V</i>	<i>B - V</i>	<i>U - B</i>	<i>n</i>	<i>m</i>	Mean errors			BSD	Type	Note
								<i>V</i>	<i>B - V</i>	<i>U - B</i>			
92-263	0 <sup>h</sup> 54 <sup>m</sup> 23 <sup>s</sup>	+0°28'11"	10.79	+1 <sup>m</sup> 05	+0 <sup>m</sup> 86	15	7	0 <sup>m</sup> 023	0 <sup>m</sup> 008	0 <sup>m</sup> 027	445	G5	
92-276	0 55 10	+0 33 46	12.04	+0.63	+0.08	13	6	0.020	0.014	0.019	457	G0	
92-282	0 55 30	+0 30 22	12.96	+0.32	-0.04	13	7	0.029	0.027	0.022	462	G:	
92-288	0 56 00	+0 28 41	11.62	+0.86	+0.48	11	6	0.015	0.012	0.021	476	G3	
92-336	0 53 45	+0 39 21	8.06	+0.98	+0.82	4	2	0.019	0.003	0.011	435	G8	
92-342	0 53 53	+0 35 07	11.62	+0.44	-0.04	11	6	0.014	0.011	0.013	441	F8	
92-348	0 54 13	+0 36 28	12.11	+0.59	+0.05	11	6	0.019	0.021	0.026	443	G0	
92-364	0 55 36	+0 35 55	11.67	+0.60	-0.03	13	6	0.018	0.015	0.012	465	G0	
92-433	0 55 37	+0 52 36	11.65	+0.66	+0.12	7	4	0.011	0.015	0.016	466	G2	
92-507	0 55 34	+0 57 51	11.33	+0.94	+0.68	7	4	0.010	0.011	0.024	463	G0	
92-508	0 55 34	+1 01 28	11.67	+0.54	-0.04	9	5	0.011	0.011	0.016	464	F5	
92-510	0 55 51	+0 58 54	9.97	+1.07	+1.03	1	1	...	...	...	473	G5	





選択区域 No. 101. 中心星は 101-333=BD+0°2588=HD 86135

## PHOTOELECTRIC SEQUENCES

TABLE I (continued)

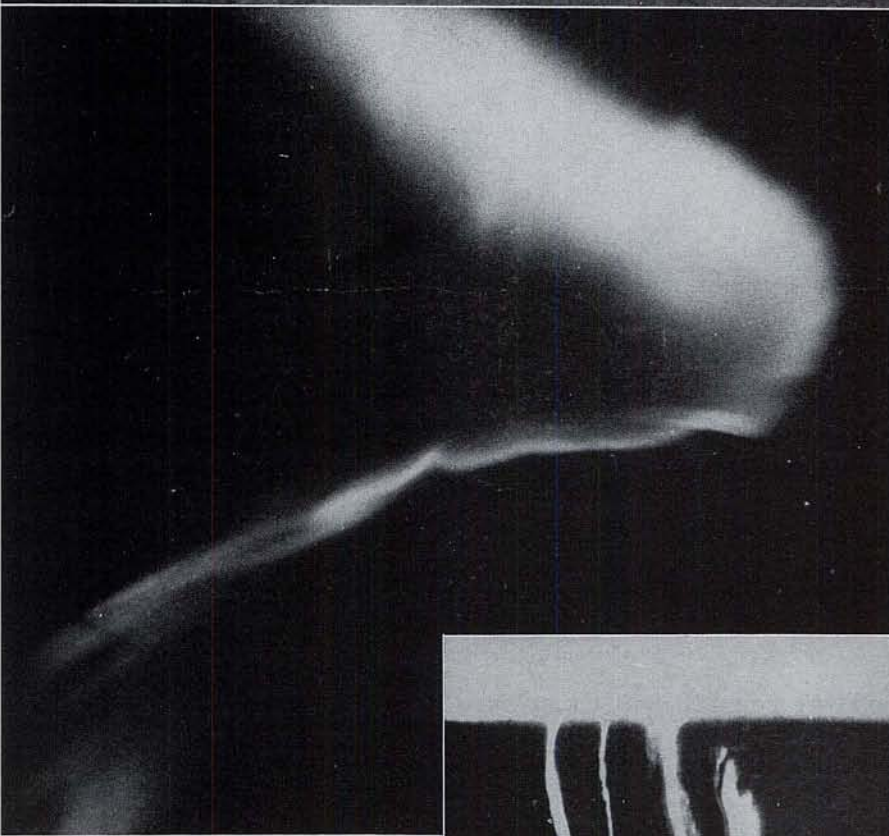
Star	$\alpha(1975)$	$\delta(1975)$	$V$	$B-V$	$U-B$	$n$	$m$	Mean errors			BSD	Type	Note
								$V$	$B-V$	$U-B$			
101- 24	9 54 19	-1 00 19	7.98	+1.12	+1.03	5	3	0.004	0.007	0.010	370	g:K0	
101- 43	9 56 13	-0 57 31	10.17	+1.16	+1.08	2	1	0.003	0.004	0.008	405	gG8	
101- 56	9 56 45	-0 59 23	11.89	+0.43	-0.04	14	4	0.011	0.011	0.018	415	F5	
101- 57	9 56 48	-0 54 11	11.58	+0.78	+0.42	12	4	0.013	0.018	0.025	416	G3	
101- 58	9 56 48	-1 01 07	12.48	+0.91	+0.44	2	1	0.003	0.003	0.030			
101- 88	9 53 25	-0 45 12	11.25	+0.97	+0.64	2	1	0.001	0.007	0.002	348	d::G5	
101- 95	9 53 50	-0 44 02	10.51	+0.51	+0.04	3	2	0.009	0.002	0.013	359	F7p	
101- 102	9 <sup>h</sup> 54 <sup>m</sup> 28 <sup>s</sup>	-0°45'01"	10.77	+0 <sup>m</sup> .57	+0 <sup>m</sup> .09	3	2	0 <sup>m</sup> .008	0 <sup>m</sup> .014	0 <sup>m</sup> .018	372	F8	
101- 109	9 54 45	-0 48 16	11.93	+0.53	+0.01	4	2	0.005	0.008	0.024	381	G0	
101- 121	9 55 56	-0 43 58	12.13	+0.64	+0.14	2	1	0.005	0.004	0.015	400	G3	
101- 169	9 53 36	-0 40 00	11.74	+0.97	+0.74	6	2	0.016	0.012	0.021	354	G3	
101- 174	9 53 45	-0 33 52	11.67	+0.62	+0.12	2	1	0.004	0.001	0.014	358	G3	
101- 207	9 56 36	-0 40 24	12.41	+0.52	-0.07	14	4	0.017	0.018	0.023	431	F7	
101- 216	9 57 00	-0 36 25	12.13	+0.69	+0.12	4	2	0.014	0.026	0.027	421	G4	
101- 281	9 55 48	-0 24 28	11.58	+0.81	+0.44	20	10	0.018	0.021	0.022	396		
101- 282	9 55 48	-0 22 50	10.00	+0.42	+0.01	7	5	0.011	0.010	0.013	397	F2	
101- 308	9 52 55	-0 20 22	10.54	+0.56	0.00	5	4	0.011	0.013	0.015	632	G0	



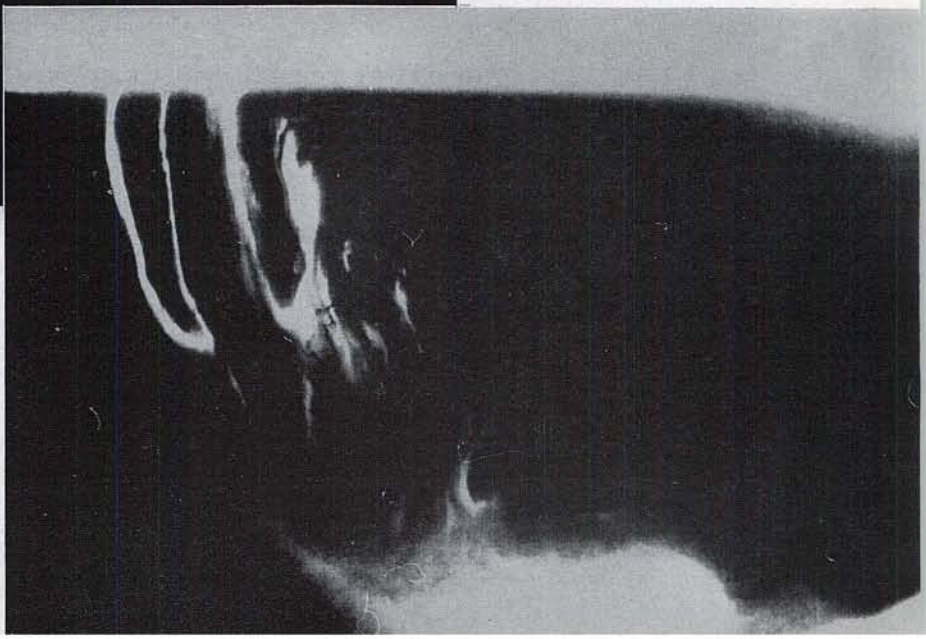
◀ 1970年10月31日の  
フレヤー



◀ オーロラ



▼ 地球の外からみたオーロラ



## 太陽フレヤーと オーロラ嵐

(本文 365 ページ参照)